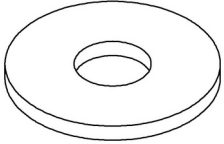


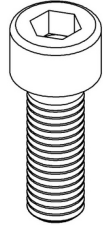
## Aufbauanleitung / *assembly instructions* mod.

### 6514, 6515 LEO Metallfuß, fest

(L: 140 & 160 cm)



**8x**  
30 x 10,5  
Unterbaupaket



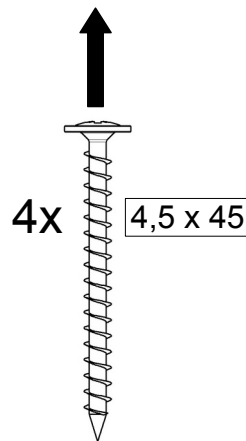
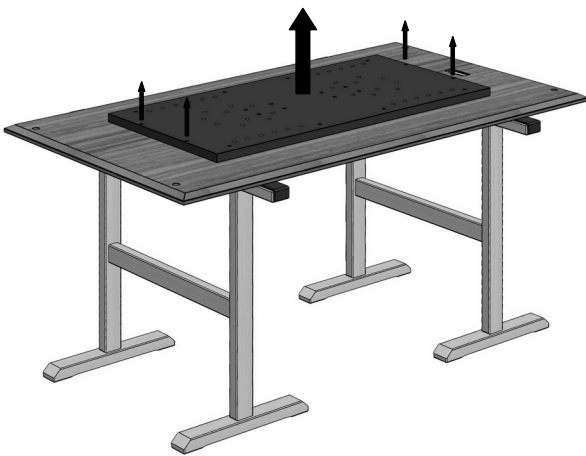
**8x**  
M10 x 30  
Unterbaupaket



**18x**  
4,5 x 45  
Oberbau

1. Montagematerial.

1. *Fitting material.*



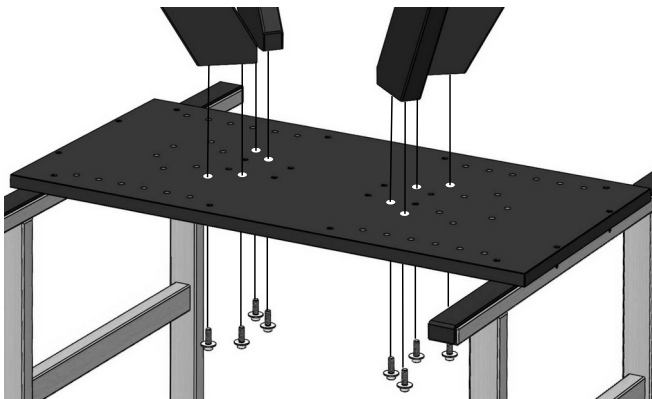
2. Den Oberbau umgedreht auf gepolsterten Montageböcken ablegen.

Den Plattenträger von dem Tischoberbau abschrauben.

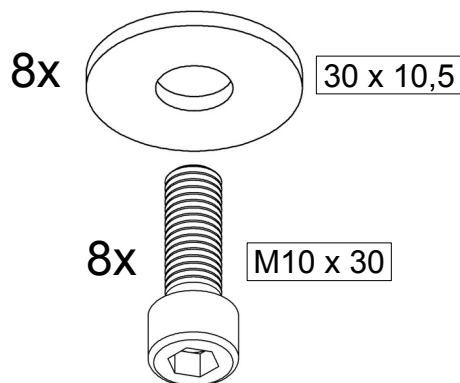
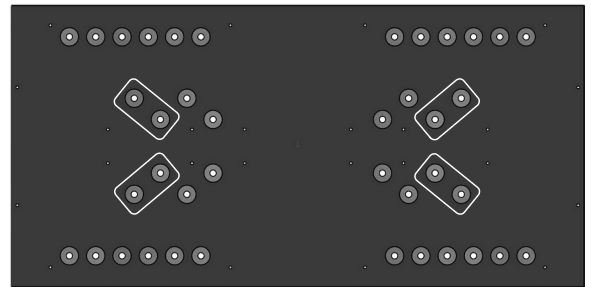
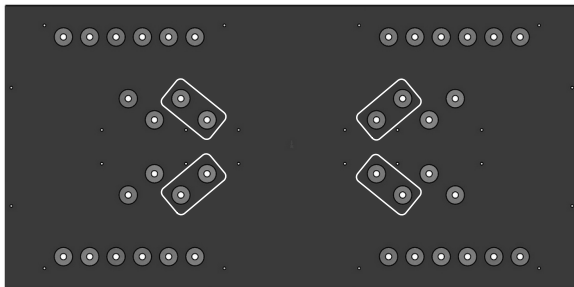
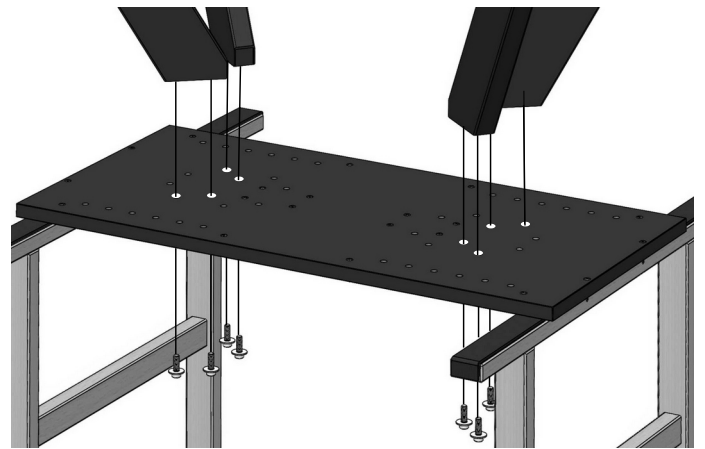
2. *Put the tabletop upside down onto padded assembling trestles.*

*Unscrew the holding plate from the tabletop.*

6514 (L = 1.400)

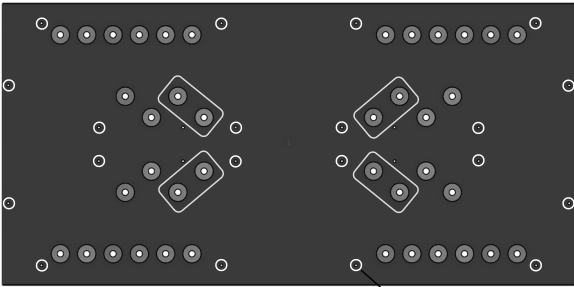


6515 (L = 1.600)

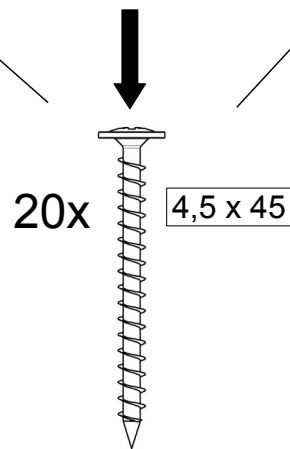
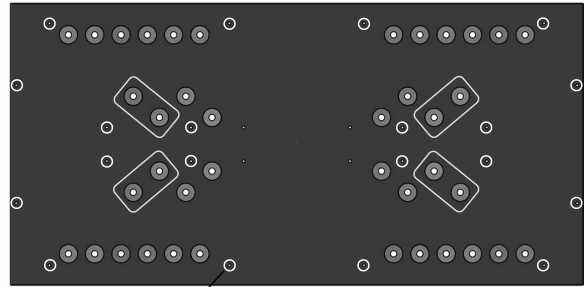


3. Die Bolzen der Tischbeine in die im Bild gezeigten Löcher stecken. Jeden Bolzen mit mit einer Unterlegscheibe und einer Mutter fixieren.
3. *Stick the bolts of the table legs into the holes which are shown in the picture above. Fix each bolt with a washer and a nut.*

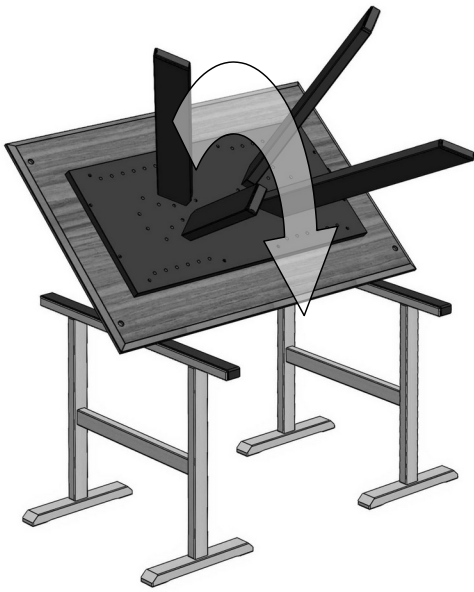
6514 (L = 1.400)



6515 (L = 1.600)



4. Die Sperrholz-Platte des vormontierten Unterbaus nun wieder an den Oberbau schrauben. Auch die zusätzlichen Spax-Schrauben eindrehen.
4. Screw on the plywood-plate of the pre-assembled tablebase to the table top again. Also screw in the additional Spax-screws.



5. Den Tisch wenden ohne die FüÙe zu belasten ...  
5. *While turning the table the feet must not touch the ground ...*

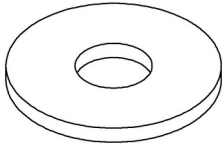


6. ... und dann gleichzeitig alle 4 Tischbeine auf dem Boden absetzen.  
**Fertig.**  
6. ... *and then put all the 4 table-legs onto the floor synchronistically.*  
**Ready.**

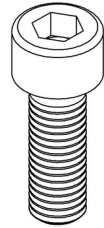
## Aufbauanleitung / *assembly instructions* mod.

### 6516, 6517 LEO Metallfuß, fest

(L: 190 & 220 cm)



**8x**  
30 x 10,5  
Unterbaupaket

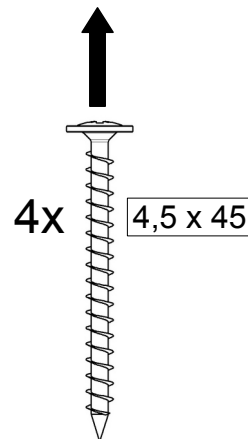
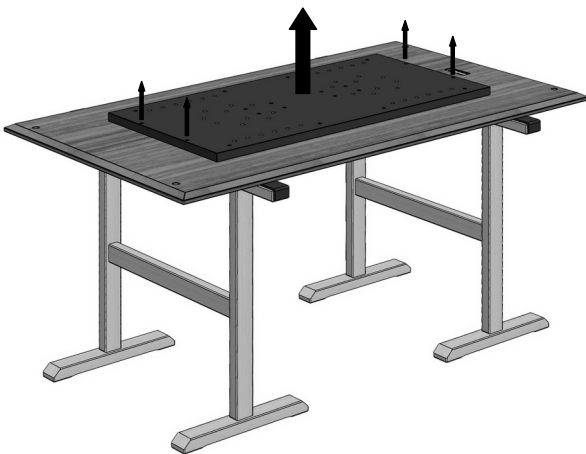


**8x**  
M10 x 30  
Unterbaupaket



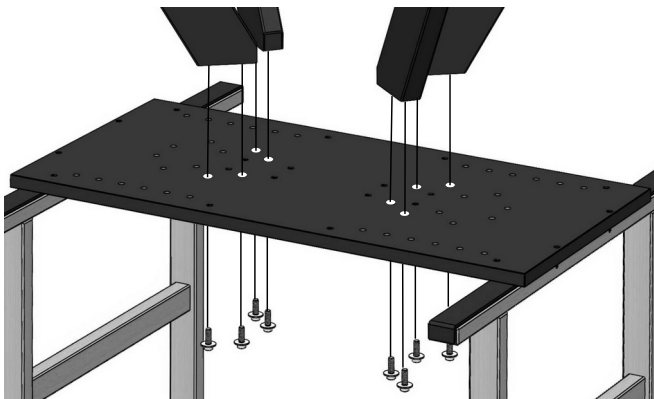
**18x**  
4,5 x 45  
Oberbau

1. Montagematerial.  
1. *Fitting material.*

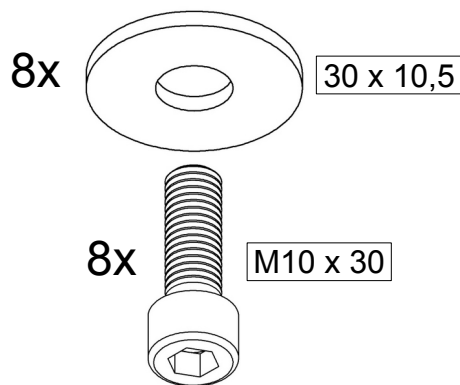
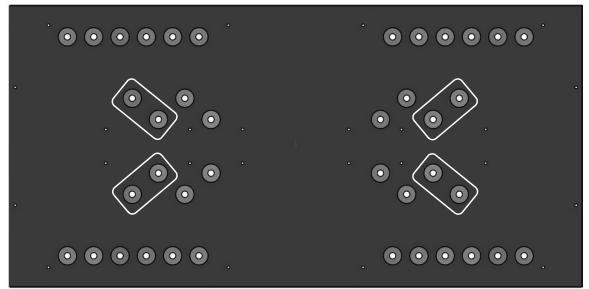
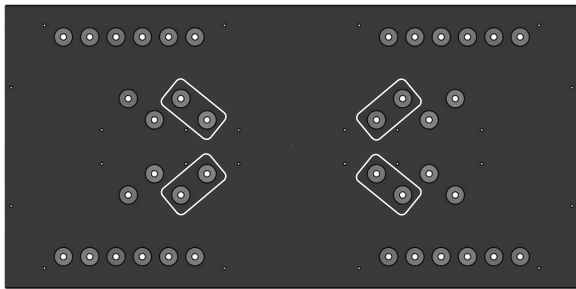
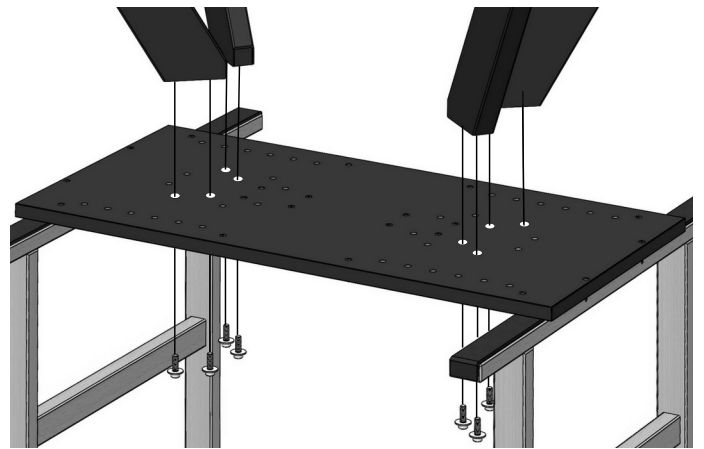


2. Den Oberbau umgedreht auf gepolsterten Montageböcken ablegen.  
Den Plattenträger von dem Tischoberbau abschrauben.  
2. *Put the tabletop upside down onto padded assembling trestles.*  
*Unscrew the holding plate from the tabletop.*

6516 (L = 1.900)

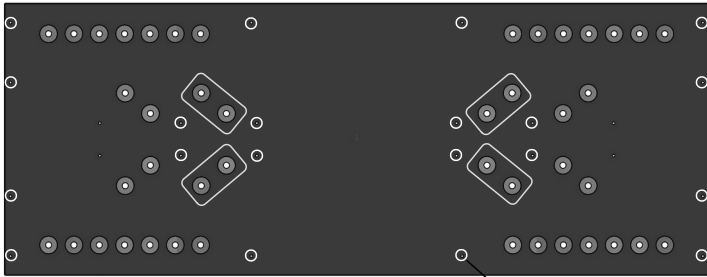


6517 (L = 2.200)

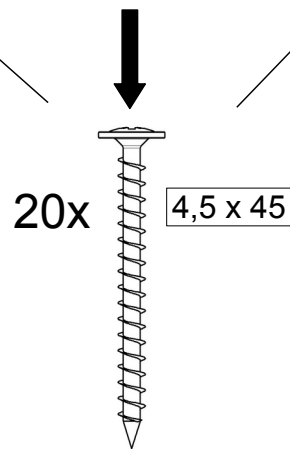
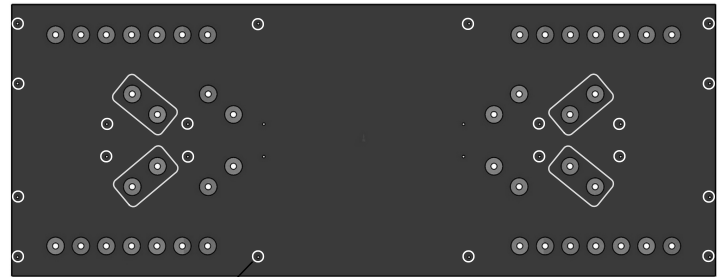


3. Die Bolzen der Tischbeine in die im Bild gezeigten Löcher stecken. Jeden Bolzen mit mit einer Unterlegscheibe und einer Mutter fixieren.
3. *Stick the bolts of the table legs into the holes which are shown in the picture above. Fix each bolt with a washer and a nut.*

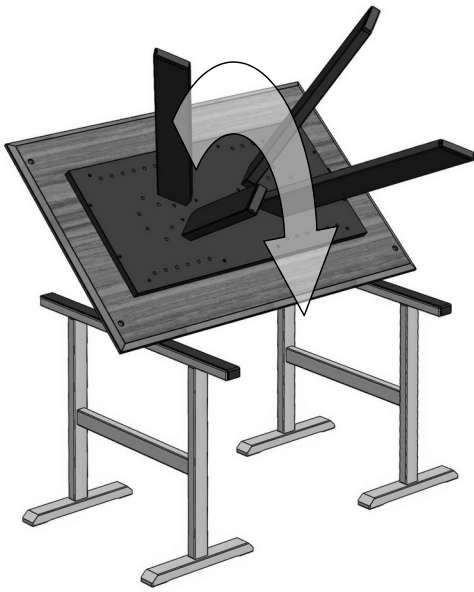
6516 (L = 1.900)



6517 (L = 2.200)



4. Die Sperrholz-Platte des vormontierten Unterbaus nun wieder an den Oberbau schrauben. Auch die zusätzlichen Spax-Schrauben eindrehen.
4. Screw on the plywood-plate of the pre-assembled tablebase to the table top again. Also screw in the additional Spax-screws.



5. Den Tisch wenden ohne die FüÙe zu belasten ...  
5. *While turning the table the feet must not touch the ground ...*



6. ... und dann gleichzeitig alle 4 Tischbeine auf dem Boden absetzen.  
**Fertig.**  
6. ... *and then put all the 4 table-legs onto the floor synchronistically.*  
**Ready.**